

# Onsite Course Outline BowTieXP

(Duration: 2 Days)

## Course Pre-requisites

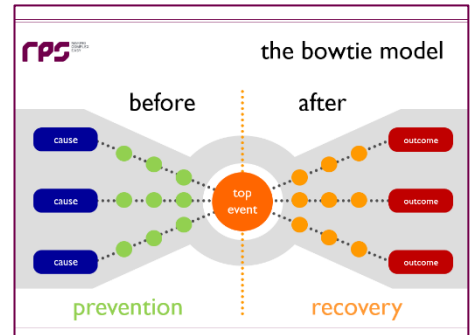
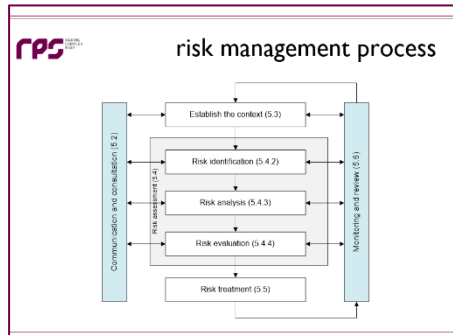
Attendees are required to have a sound understanding of the fundamentals of risk management and risk management processes. Attendees will also have basic computer skills and knowledge of Microsoft office products.

## Course Overview Day 1

### Introduction to Risk Management and BowTieXP Theory

- Risk Management Principles
- BowTieXP Methodology Theory

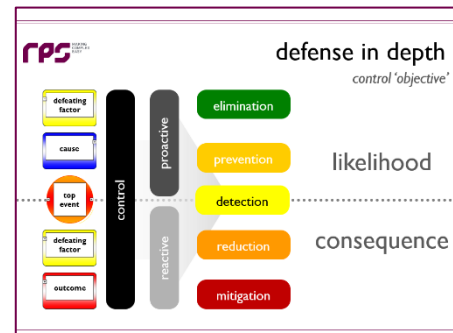
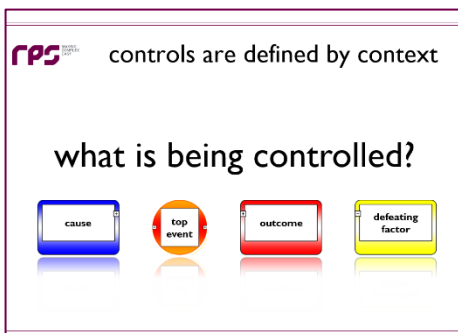
The program begins with the review of the risk management process that underpins the approach to qualitative risk management. The course branches out into a detailed explanation of how to apply the BowTieXP risk management methodology, to the analysis of major hazards and unwanted events. A practical approach is adopted throughout the presentation and is based on significant industry experience.



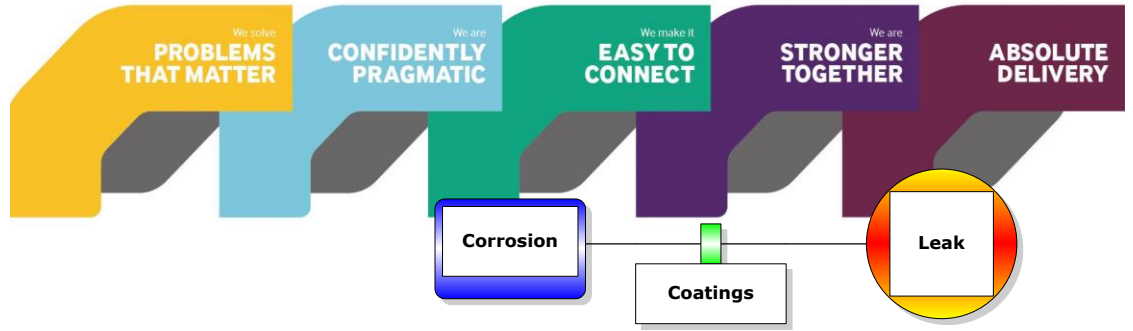
## BowTieXP Risk Management Software Application

- BowTieXP software introduction
- BowTieXP software demonstration
- BowTieXP learning exercises

The methodology is applied using the BowTieXP software to expedite learning by creating simple Bowties using all of the Bowtie elements and navigating through the software considering various practical scenarios. This session addresses the best practices for using the software in a corporate learning environment and to use its powerful features to create risk assessments in preventing and minimising exposure to unwanted events in the workplace.



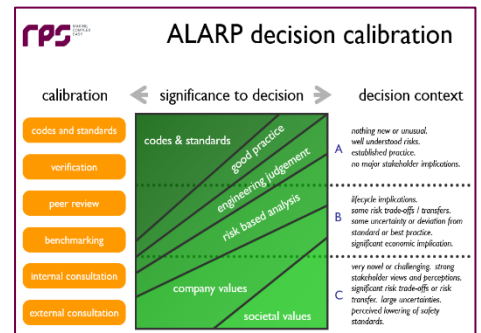
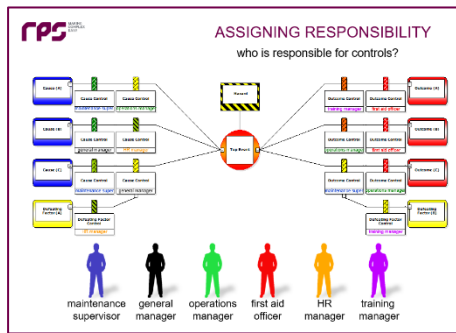
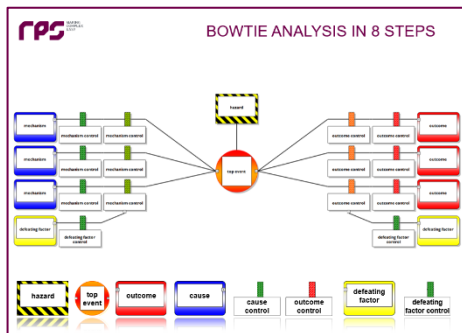
Rating	Availability	Reliability	Human Factor	
++	In place and used all of the time	Very reliable (100%)	No human involvement, simple instructions, easy to operate, intuitive, proven operator performance. Error practically impossible.	Very effective
+	In place and used most of the time (approx. > 95%)	Reliable (> 95% but < 100%)	Clearly defined task, defined operating procedures, personnel trained and experienced. Error conceivable but very unlikely.	Effective
0	In place and used occasionally (approx. > 50% but < 90%)	Fairly reliable (> 75% but < 95%)	Operating under stress, multistep, complex procedures, difficult to operate, person is trained but errors considered possible.	Fairly effective
-	Not permanently in place and used infrequently (approx. < 50%)	Unreliable (> 50% but < 75%)	Operating under high stress, complex or unclear procedures, inadequate training. Errors considered likely possible.	Ineffective
--	Not in place and never used	Very unreliable (< 50%)	Personnel unfamiliar with the task, very complex procedures, no operator training. Errors can be expected in emergency situation.	Very ineffective
?	Unknown	Unknown	Unknown	Unknown



## Course Overview Day 2: BowTieXP Risk Management Software and Workshop

- BowTieXP advanced features for analysis
- BowTieXP case study

Day 2 begins with various navigation techniques, software demonstration of the advanced features of the software, hands-on exercises and case studies. The hands-on exercises provide a good insight into the capabilities of the software for reporting and risk analysis. By the end of Day-2 participants will be prepared to apply the BowTieXP management software in their workplace.



### Tailored in-house / custom courses

### Learning Outcomes

- Identify how and where bowtie analysis fits into existing risk management practices
- Use bowtie analysis for risk assessments
- Apply the BowTieXP software to implement bowtie analysis

In-house custom courses can also be delivered on demand at your location of choice we have global reach.

### Contact Us

### Who should attend?

Risk Engineers, Risk Managers, Auditors, Supervisors, Managers, Safety Professionals and leaders responsible for managing risk activities.

### BowTieXP Software

Attendees get free access to the BowTieXP software for two months and a Certificate of Attendance.

**WESTERN AUSTRALIA**  
Level 3, 500 Hay Street  
Subiaco, WA 6008, Australia  
Phone: +61 8 9211 1111

Email  
[RPS.bowtie@rpsconsulting.com](mailto:RPS.bowtie@rpsconsulting.com)



## Course Dates



### Victoria

20<sup>th</sup> – 21<sup>st</sup> May 2024, Melbourne

### New South Wales

27<sup>th</sup> – 28<sup>th</sup> May 2024, Sydney

### Queensland

23<sup>rd</sup> – 24<sup>th</sup> May 2024, Brisbane

### Malaysia

5<sup>th</sup> – 6<sup>th</sup> June 2024, Kuala Lumpur



about us

**global advisory and consultancy**

**5600**  
Talented people

**125**  
Countries

**6**  
Continents

**250**  
Diverse services

**A BRAND BUILT ON PURPOSE**  
In a complex world, we create shared value by solving problems that matter to a growing, urbanising and resource-scarce world



**OFFICE LOCATIONS**

**UNITED STATES**  
Atlanta  
Austin  
Beaumont  
Boston  
Charleston  
Chicago  
Corpus Christi  
Dallas  
Houston  
Irvine  
Mountain View  
Oakland

Pano  
Round Rock  
San Antonio  
Seattle  
South Kingstown

**CANADA**  
Calgary

**UNITED KINGDOM**  
Aberdeen  
Abingdon  
Alton  
Albourne  
Aixminster  
Bedford  
Belfast  
Birmingham  
Brentford  
Bournemouth  
Brighton  
Bristol

Cambridge  
Cardiff  
Chepstow  
Cheltenham  
Clevedon  
Derby  
Dorchester  
Edinburgh  
Elsmere-Port  
Exeter  
Glasgow  
Grangemouth  
Huddersfield

Ilam  
Kirkcubbinloch  
Leeds  
London  
London Wall  
Manchester  
Middlesbrough  
Milton Keynes  
Newark  
Newcastle  
Northwich  
Nottingham  
Sheffield

Southampton  
Stafford  
Warrington  
Cumbria  
Woking  
Wolverhampton

**IRELAND**  
Cork  
Dublin  
Galway  
Letterkenny  
Sligo

**THE NETHERLANDS**  
Amsterdam  
Breda  
Delft  
Leerdam  
Zwolle

**NORWAY**  
Alesund  
Kristiansand  
Oslo  
Stavanger  
Trondheim

**RUSSIA**  
Sevskalin

**AUSTRALIA**  
Adelaide  
Brisbane  
Cairns  
Canberra  
Darwin  
Gold Coast  
Ipswich  
Mackay

Margaret River  
Melbourne  
Newcastle  
Perth  
Port Douglas  
Sunshine Coast  
Sydney  
Townsville  
Whitsundays  
Wollongong

**NEW ZEALAND**  
Wellington

**INDONESIA**  
Jakarta

**MALAYSIA**  
Kuala Lumpur

**PAPUA NEW GUINEA**  
Port Moresby